

IT DIRECT

Printer Connection Manager



Table of Contents

OVERVIEW	2
SETUP INSTRUCTIONS:.....	3
INSTALLATION	5
Install with New Settings.xml file:	8
Command line options:	8
ADMIN SETUP TAB	9
REGISTER SOFTWARE:	10
ADMIN USERS	11
Adding New Printer	12
Add New Location:.....	13
Get Printer Details:	13
Delete Printer:	13
Delete Location.....	13
Std User Menu:	13
SERVICE DESK USERS:.....	15
ADVANCED XML FILE SETTINGS	16
PCM LOGIC FLOW DIAGRAM:.....	18

Overview

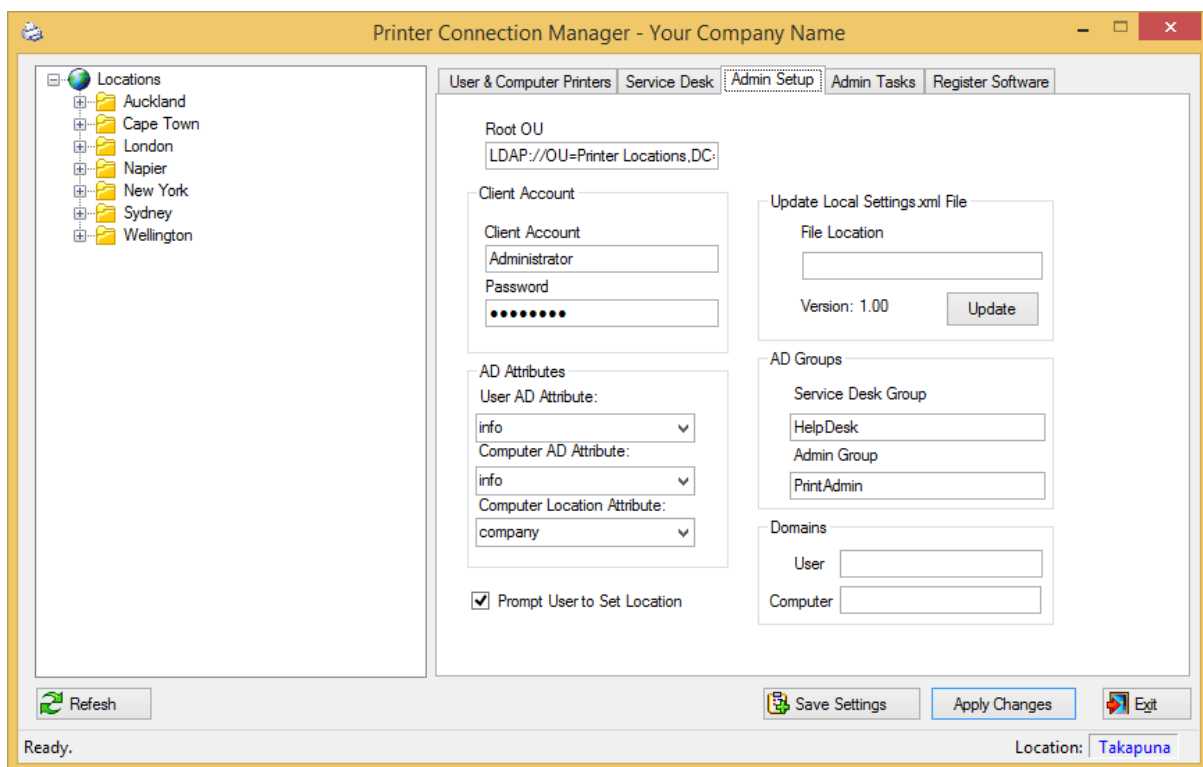
Printer Connection Manager (PCM) is designed to make selecting network printers as easy as possible for users. If your network environment is large and consists of multiple sites, locations, buildings etc. PCM will make sure each time a user logs on to a PC they will have a printer connected (as setup by an Administrator) If the printer setup is not what they require then the user can configure the printers as required.

PCM can:

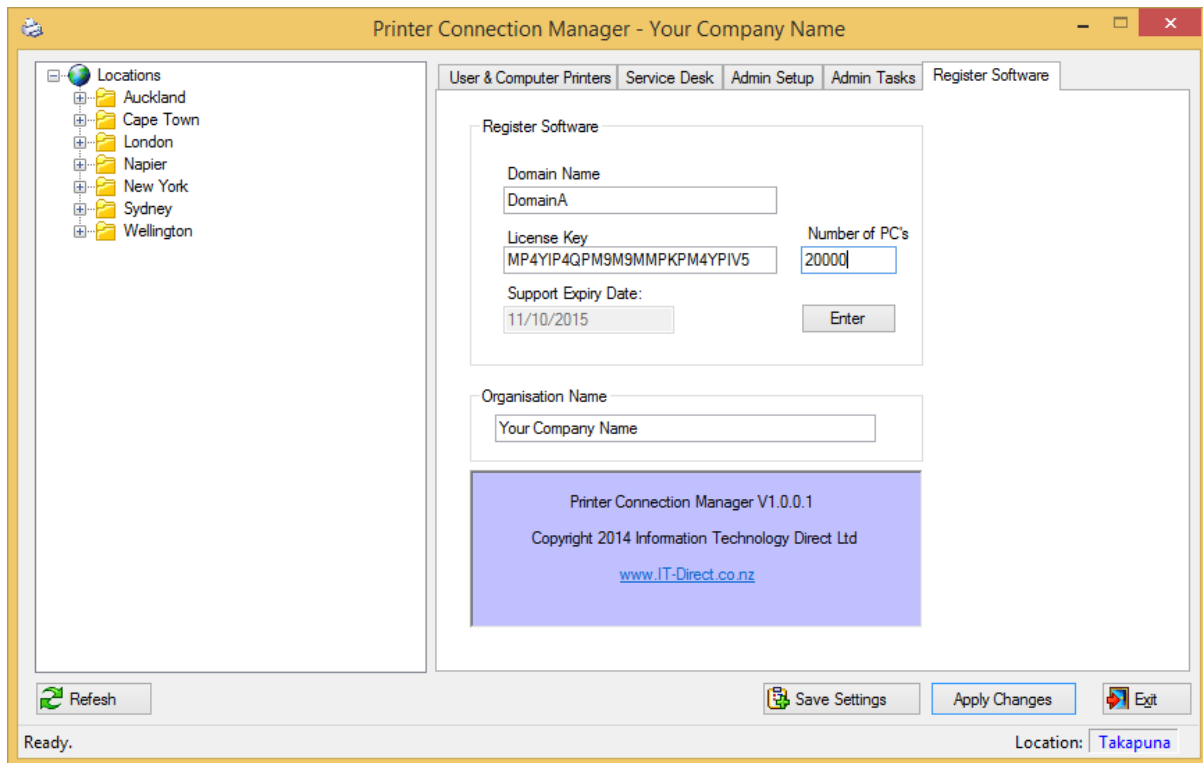
- Set default printers based on a location setting (As configured by an Administrator)
- Allow users to change locations
- Allow users assign a printer to their user account (Printer then follows user account)
- Allow users assign a printer to the computer (All users on this computer then get these printers)
- Connect a printer selected from the tree view (Printer does not get assigned to user/computer)

Setup Instructions:

1. Create an OU in Active Directory to use as the Root Node for PCM
2. Select two Computer AD Attributes to use – Must be a String value (PCM has a drop down box with a list – Select one that is not being used for anything else)
3. Select one User AD Attribute to use
4. Create an AD Account (Or use Existing one) this account must have read/write access to the above OU created in step 1. And the AD Attributes that have been selected. Either use Domain Admin account or Delegate permissions in AD for this Account.
5. Create Two AD Groups (Or use existing ones) One for Admin access to PCM and one for Service Desk Access to PCM (Add your User account to the Admin Group now.)
6. Install PCM onto a computer, and Run it. It will start in Admin mode. Go to the Admin Setup TAB and enter the information required. (Click Save Settings Button)



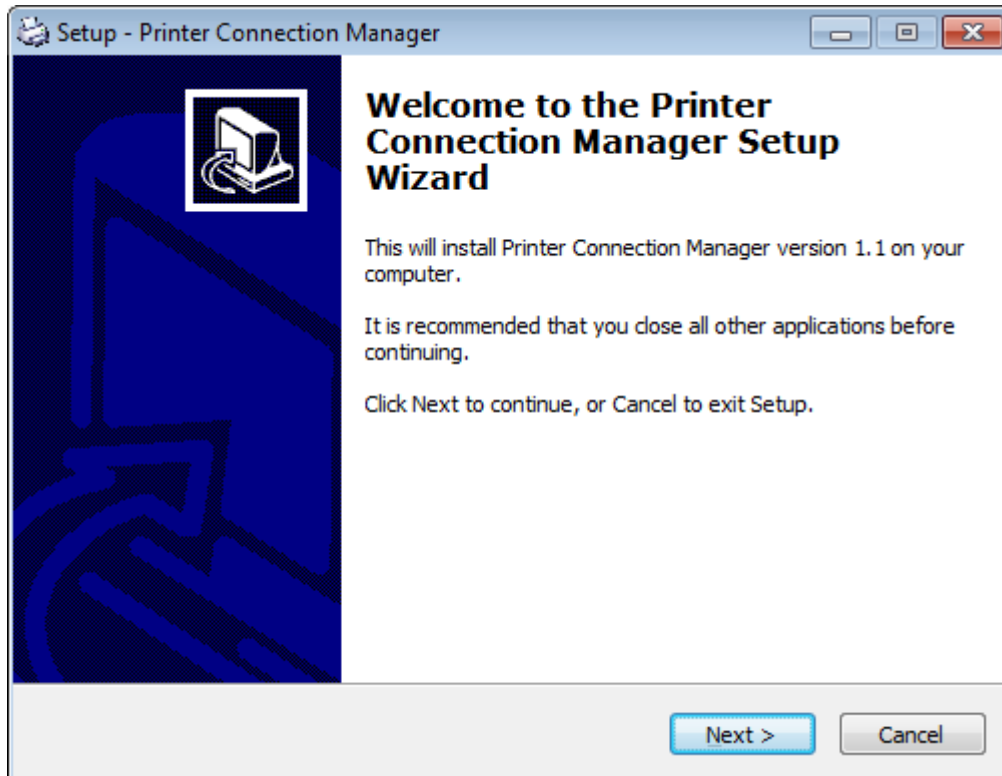
7. If you have purchased a license key enter the information on the Register Software TAB (Hit Enter button)



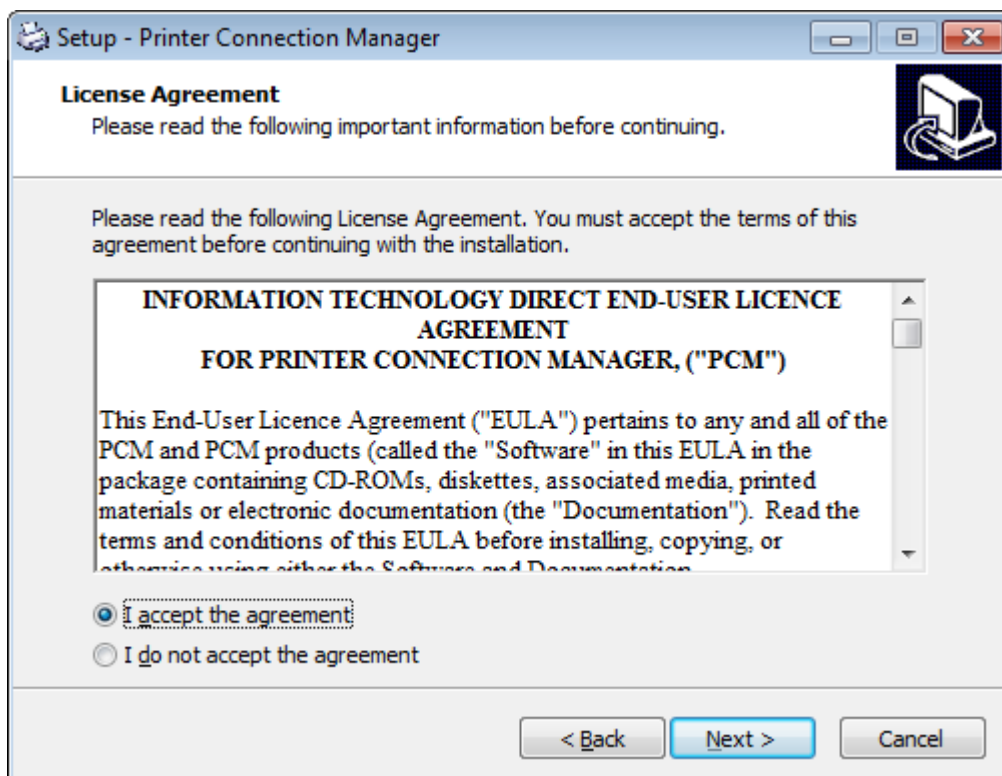
8. Restart PCM
9. Use Right Click on the Treeview to add Locations and printers.
10. Take a copy of the local Settings.xml file and use this to install on other Computers. (See Install Instructions on how to install with new Settings.xml file)

Installation

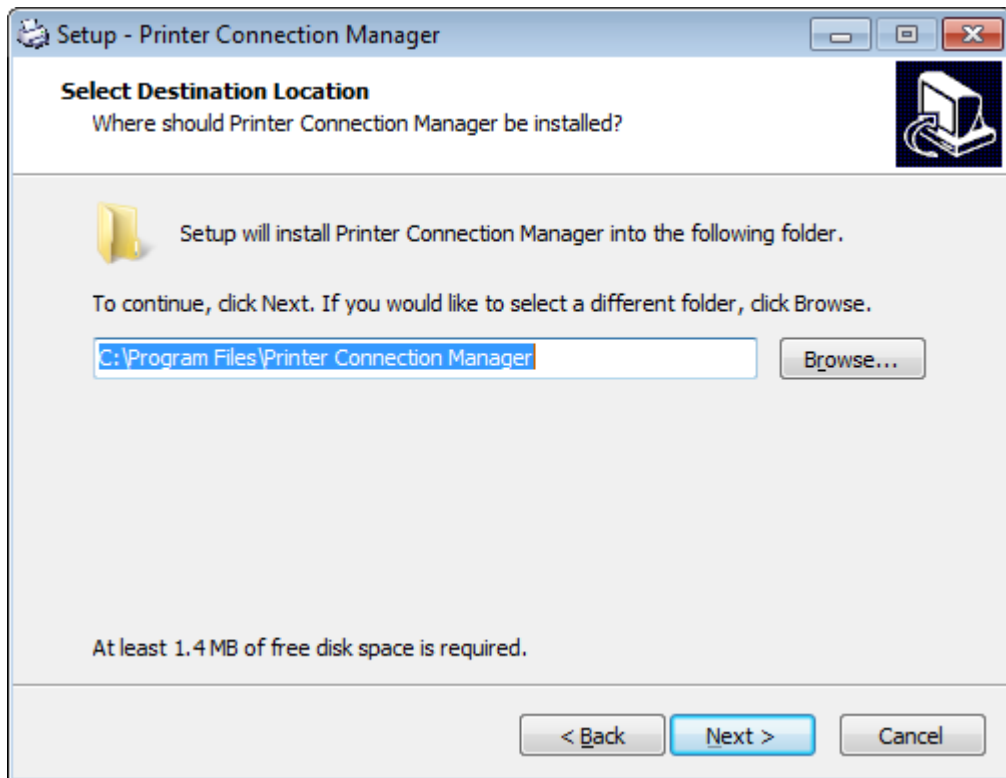
Run PCM_Setup.exe



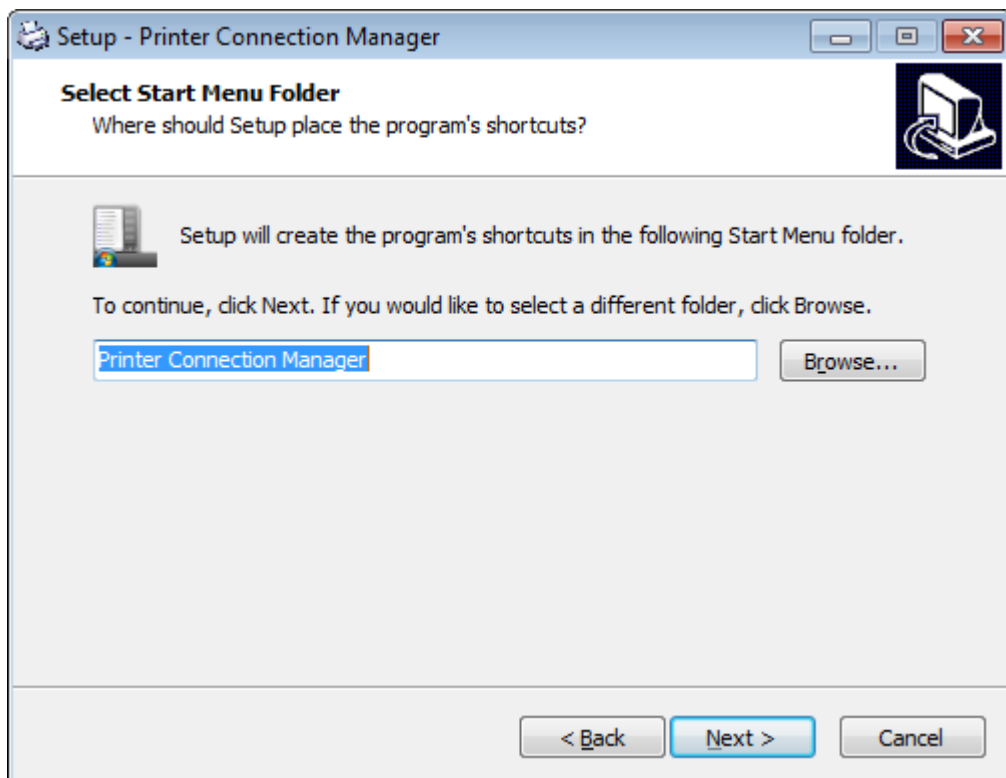
Accept License Agreement



Select Destination Folder

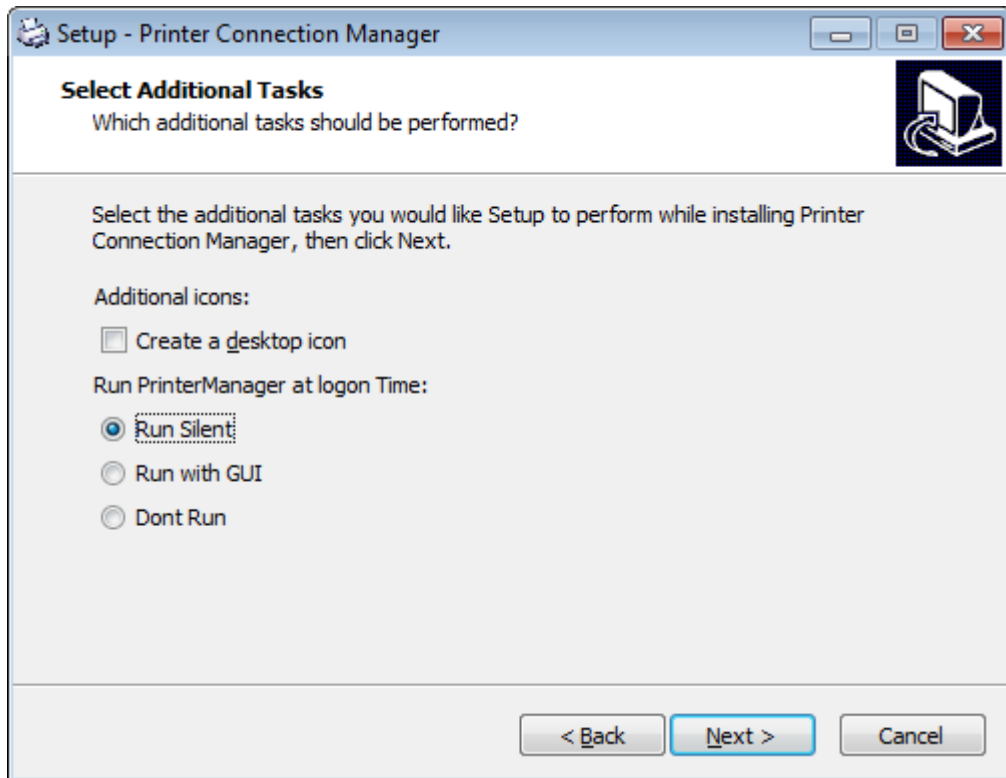


Select Shortcuts Folder

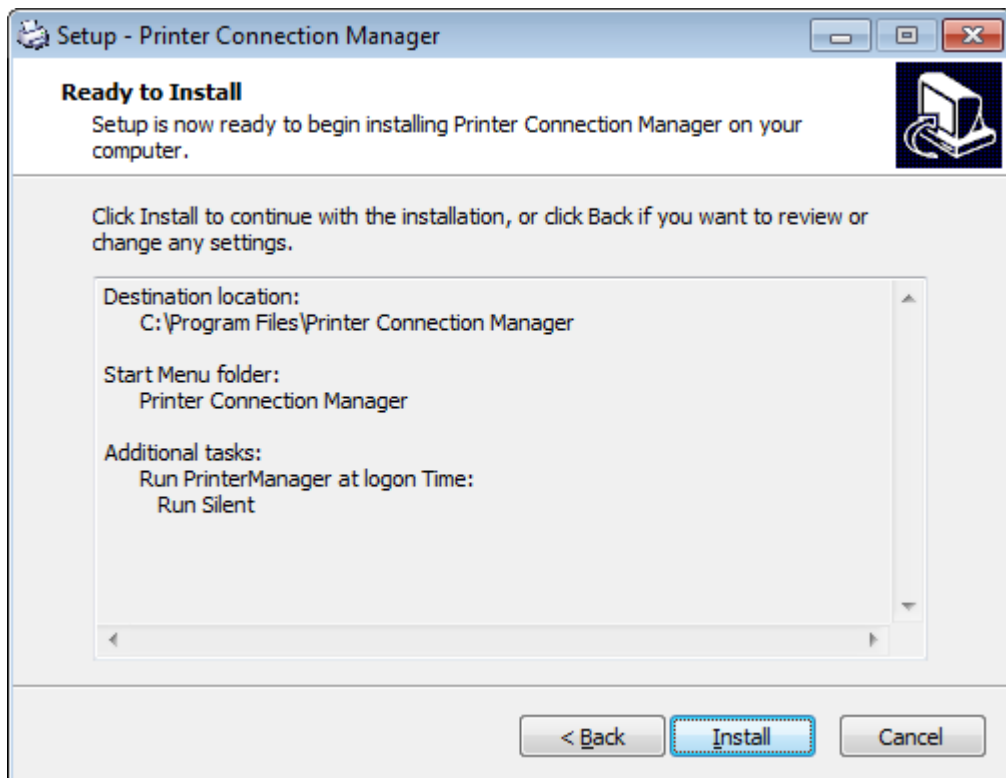


Select options:

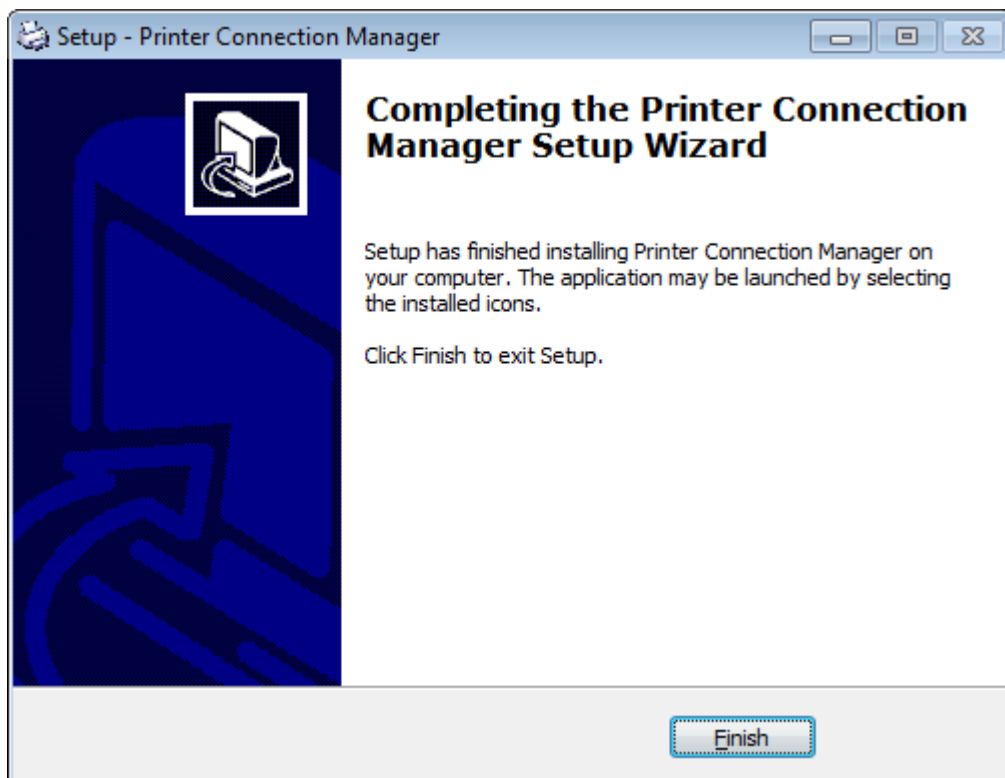
PrinterManager.exe should run at login time, it can run silent or with a GUI (default is silent)



Ready to install



Setup Complete



PCM_Setup.exe with modify the NTFS permission on the install directory, So PCM can update the Settings.xml file. Also Configures the Event log source so PCM can write to event log.

Install with New Settings.xml file:

If a Settings.xml file exists in the same directory as the PCM_Setup.exe file. Then it will be copied down to the install directory during the setup. So the configuration file can be updated at install time.

Command line options:

Change Default install Directory: /Dir="C:\Program Files\MyDir"

Change Default Start Menu Folder: /Group="Folder Name"

Silent install: /Verysilent

Example: PCM_Setup.exe /Dir="C:\Program Files\PCM" /VerySilent

Admin Setup TAB

The screenshot shows the 'Admin Setup' tab of the Printer Connection Manager. The interface includes a tree view of locations on the left and several configuration panels on the right. The 'Root OU' field is populated with 'LDAP://OU=Printer Locations,DC:'. The 'Client Account' section has 'Administrator' for the account name and a masked password. The 'AD Attributes' section has three dropdown menus: 'User AD Attribute' set to 'info', 'Computer AD Attribute' set to 'info', and 'Computer Location Attribute' set to 'company'. The 'Update Local Settings.xml File' section has an empty 'File Location' field and 'Version: 1.00'. The 'AD Groups' section has 'Service Desk Group' set to 'HelpDesk' and 'Admin Group' set to 'PrintAdmin'. The 'Domains' section has empty fields for 'User' and 'Computer'. A 'Prompt User to Set Location' checkbox is checked. At the bottom, there are buttons for 'Refresh', 'Save Settings', 'Apply Changes', and 'Exit'. The status bar at the very bottom shows 'Ready.' and 'Location: Takapuna'.

Root OU:

This is the AD path to the Root OU used in Active Directory

Example: LDAP://OU=Printers,OU=Data,DC=DomainA,DC=COM

Client Account:

This account is used to write to Active Directory objects . It Can be a Domain Admin Account, or access must be delegated to give this account Read/Write Access to the AD Objects

AD Attributes:

These are the Attributes PCM will store the information in Active Directory.

Prompt User to Set Location:

This is used to turn on/off the prompting if no Location has been set on the PC.

Update Local Settings.xml File:

PCM will check if this file exists and the version. If the version is different from the local settings.xml file then it will update the Local Settings.xml file. If this text box is left blank, no checking is done.

This file can also be updated by Group Policy or tools like SCCM if necessary.)

Example: <\\Server\Netlogon\PCM\Settings.xml>

AD Groups:

These two groups are used to provide access to PCM ServiceDesk and Admin Functions

Domains:

If the Computers and user accounts are in different domains then these can be added here. Otherwise PCM will use the current users account domain

Save Settings Button:

Once all the Admin setup fields have been entered, this button will save the info to the settings.xml file. This file can then be installed with the application.(See install Section)

Register Software:

Printer Connection Manager - Your Company Name

User & Computer Printers Service Desk Admin Setup Admin Tasks Register Software

Locations

- Auckland
- Cape Town
- London
- Napier
- New York
- Sydney
- Wellington

Register Software

Domain Name
DomainA

License Key
MP4YIP4QPM9MMPKPM4YPIV5

Number of PC's
2000

Support Expiry Date:
11/10/2015

Enter

Organisation Name
Your Company Name

Printer Connection Manager V1.0.0.1
Copyright 2014 Information Technology Direct Ltd
www.IT-Direct.co.nz

Refresh Save Settings Apply Changes Exit

Ready. Location: Takapuna

Domain Name:

Must be the user's account domain name

License Key:

License key will be provided by It Direct on purchase. Without this key, PCM will function as normal but no printers will actually be removed or connected.

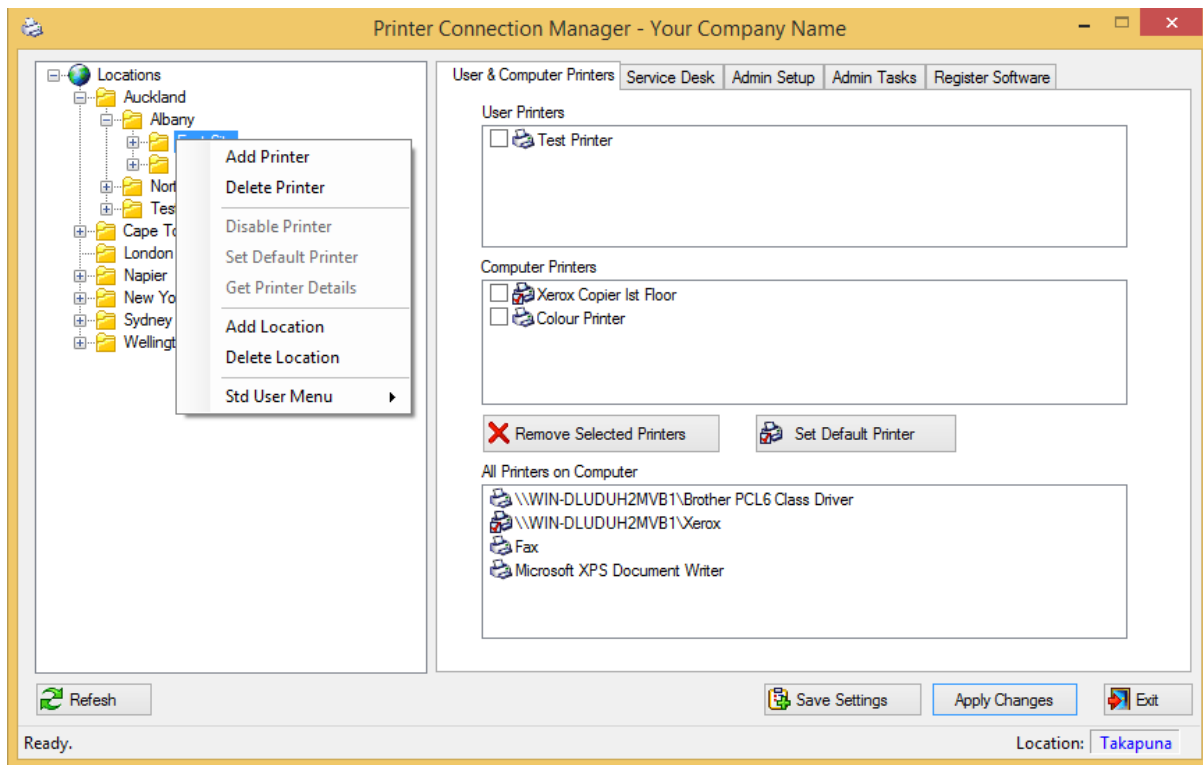
Number of PC's:

Number of PC's licensed for. The PCM license is based on number of PC's it is installed on.

Organisation Name:

This is the name that is used in the Title at the top of the application form.

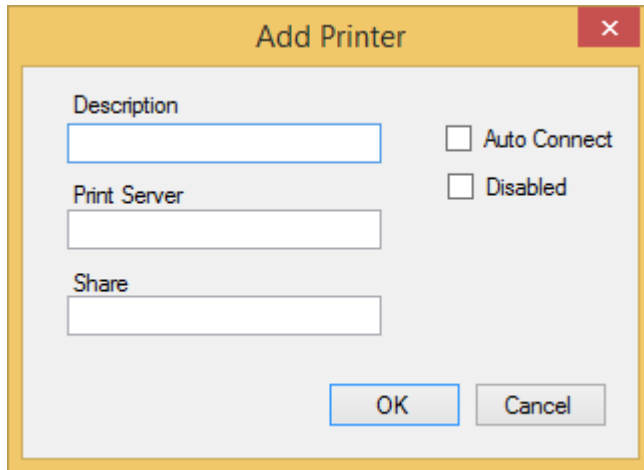
Admin Users



PCM will go into Admin mode when run for the first time, which then displays all tabs and a different menu on the tree view. Once setup is complete, Admin users should be in the Admin Group as specified in the Admin Setup tab.

Admin users have the ability to add/delete locations and printers.

Adding New Printer



The screenshot shows a dialog box titled "Add Printer" with a yellow border and a close button in the top right corner. The dialog contains three text input fields: "Description", "Print Server", and "Share". To the right of these fields are two checkboxes: "Auto Connect" and "Disabled". At the bottom right of the dialog are two buttons: "OK" and "Cancel".

Description:

Description for the printer.

Example: Colour Printer – Back Office

Print Server:

Name of the print server.

Example: Server1 (Do not use [\\Server1](#))

Share:

Share name used to connect

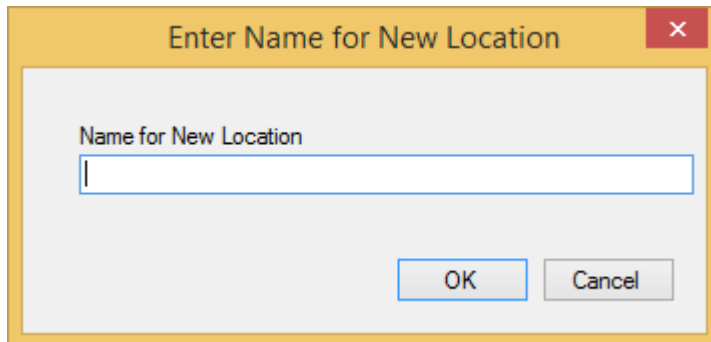
Auto Connect:

If ticked on, then the printer will automatically be connected to all computers at the location that do not have any printers manually assigned. These are the default printers that are connected to all Computers that have not had any printers assigned to them at this location.

Disabled:

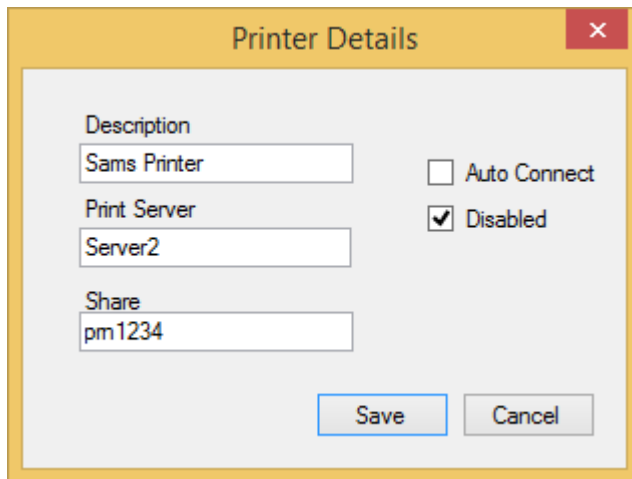
Any printer that is disabled appear greyed out in the tree view. Standard users will not see any disabled printers and PCM will not connect any disabled printers.

Add New Location:



Enter new location Name and press OK

Get Printer Details:



Displays the selected printer's details and allows Admin user to change them.

Delete Printer:

Deletes the selected printer, The Printer cannot be deleted if it is still assigned to a user or computer. If it is still assigned then the admin tasks can be used to remove it from any users or computers. Once done it can then be deleted.

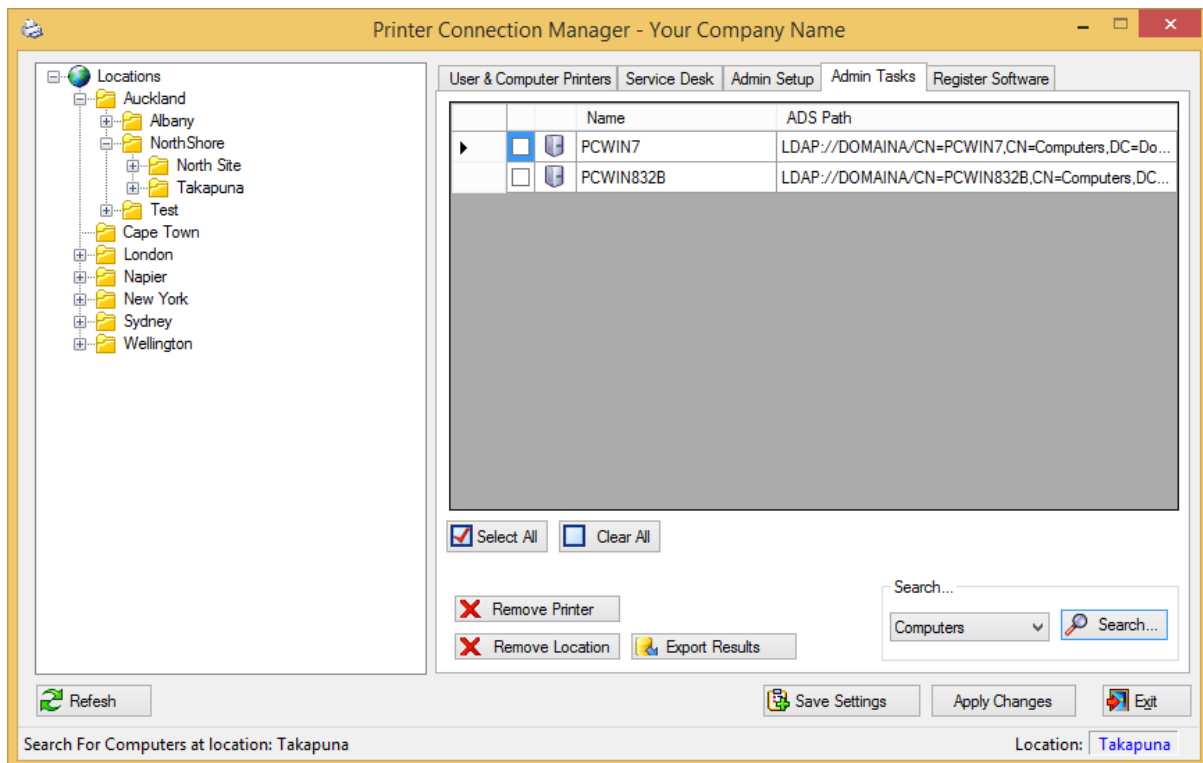
Delete Location:

Deletes the selected location. All Printers must be deleted from the location before you can delete the location and no computers can have this location set. If there are computers using this location you can then use admin tasks to remove them.

Std User Menu:

This is the standard user menu that the administrator can use to manage their own printers or use with the Service Desk Tab.

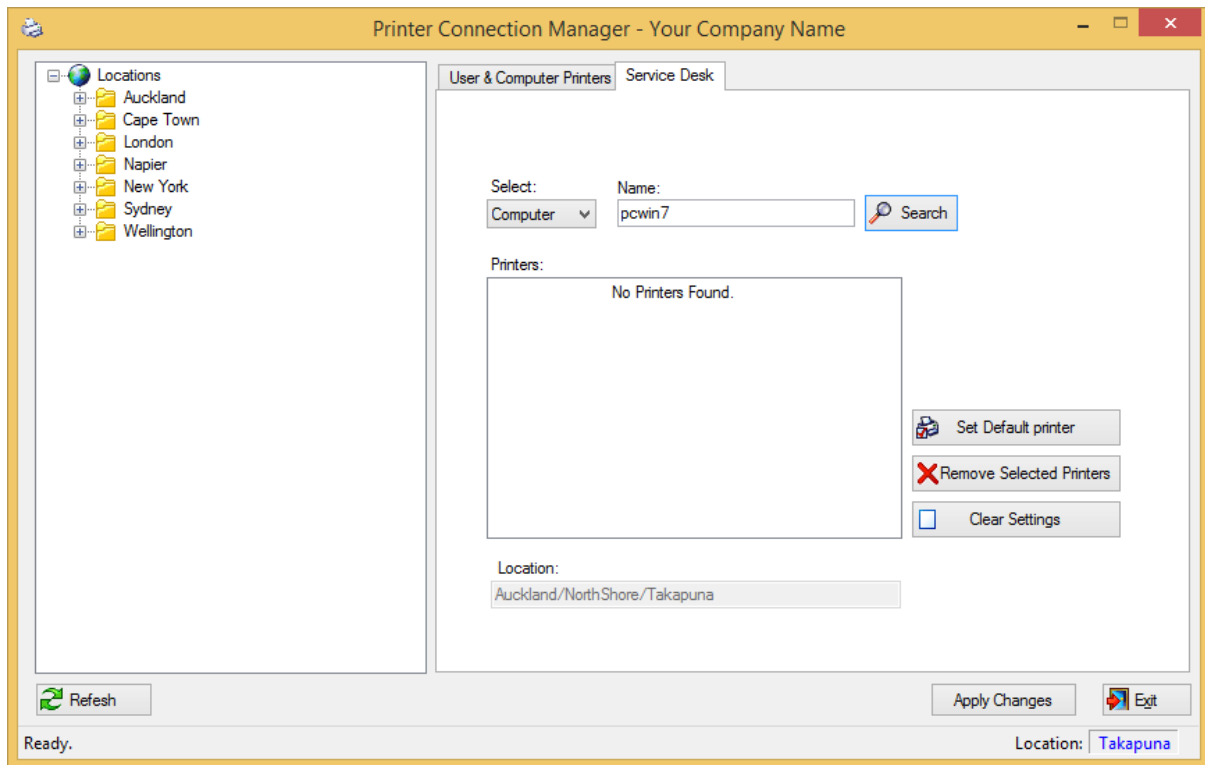
Admin Tasks:



Admin tasks are available to the users in the Admin group. This allows Administrators to search Active Directory for all computers at a location, or all Users/Computers that are assigned a selected printer. The results of the search can be exported to a TAB delimited file.

It is also used to remove the printer setting from users/computers or remove location information from computers. PCM will not delete a location or printer if it's still assigned to a user or computer. (Location will not be deleted if any printers still exist at the location)

Service Desk Users:



These users have the ability to change the printer and location settings for other users/computers. Select either user or computer from the drop down box, Type in a name to search for and press search.

You can then change the default printer, or remove printers or clear the AD attribute for the user/computer.

Using the right click menu in the Tree view you can also add printers, or change location for the selected user/computer

Advanced XML File Settings

Extra Settings are available to configure PCM as required

Disconnect Printers at logon time

DoNotRemove – Any Printer in the list will not be removed at logon time.

Format: \\server\share;\\Server\Share;\\Server\Share;....

```
<Settings>
  <Client>
    <DoNotRemove>\\Server1\Pshare1;\\Server4\share3;</DoNotRemove>
  </Client>
</Settings>
```

DoNotRemovePrinters - If set to 'True' No printers will be removed at logon time, If an AD group is specified, PCM will not remove any printers if the Computer is in the AD Group.

Format: [True][False][AD Group Name] – defaults to False

```
<Settings>
  <Client>
    <DoNotRemovePrinters>True</DoNotRemovePrinters>
  </Client>
</Settings>
```

Right Click Menu options for end users – Displays or hides menu options

Format: [Enabled][Disabled] – Defaults to Enabled

```
<Settings>
  <Client>
    <ConnectPrinter>Enabled</ConnectPrinter>
    <AssignUser>Enabled</AssignUser>
    <AssignComputer>Enabled</AssignComputer>
    <SetLocation>Enabled</SetLocation>
  </Client>
</Settings>
```

TreeView Root Node name – Change Name of root node

Format: [Text] – Defaults to 'Locations'

```
<Settings>
  <Admin>
    <RootNodeName>Your Text Here</RootNodeName>
  </Admin>
</Settings>
```

AD Group Attribute – Used to Store Printer data in AD, Any String Attribute can be used

Format: [Text] – Defaults to 'Info'

```
<Settings>
  <Admin>
    <GroupProperty>Your Text Here</GroupProperty>
  </Admin>
</Settings>
```

Delimiter – used to separate printer data in the AD Attribute

Format: [Char] – Defaults to vbCrLf

```
<Settings>
  <Admin>
    <GroupDelimiter>|</GroupDelimiter>
  </Admin>
</Settings>
```

Client Font Size – Changes font size in Treeview and ListBoxes

Format: [Integer] – Defaults to 8.25

```
<Settings>
  <Client>
    <FontSize>10</FontSize>
  </Client>
</Settings>
```

ListBox Labels – Changes ListBox Labels

Format: [Text]

```
<Settings>
  <Client>
    <UsersPrintersText>User Printers</UsersPrintersText >
    <ComputerPrintersText>Computer Printers</ComputerPrintersText >
    <AllPrintersText>All Printers on Computer</AllPrintersText >
  </Client>
</Settings>
```

Show Errors – Shows messagebox with errors on startup of Application

Format: [True][False] – Defaults to False

```
<Settings>
  <Client>
    <ShowErrors>True</ShowErrors>
  </Client>
</Settings>
```

PCM Logic flow Diagram:

PCM runs Printmanager.exe at logon time to connect printers. This is the logon Process.

